

HFL

4140(S)E

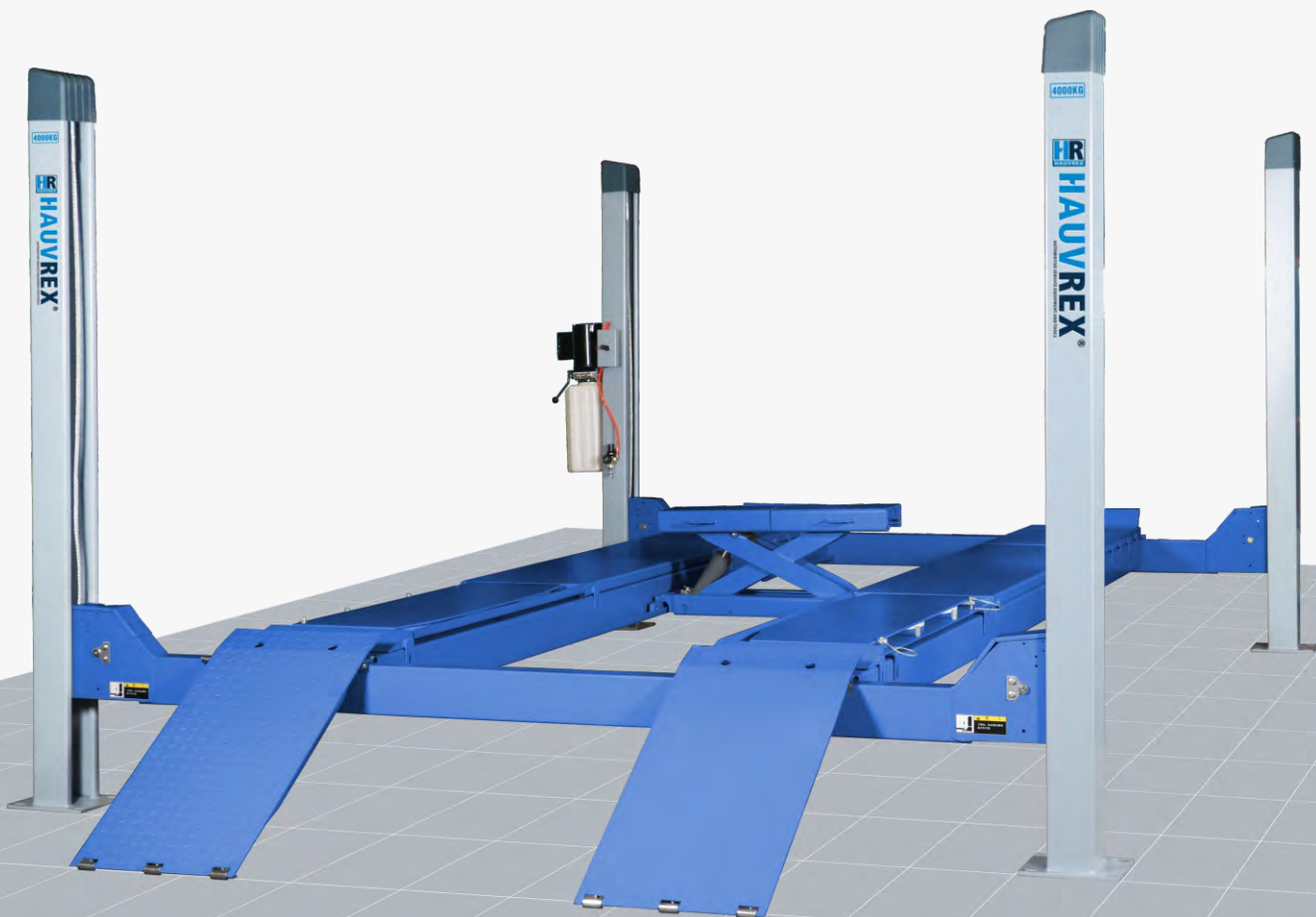
Min.
170mm

1900mm
Max.

4000kg
Capacity

4.0 Ton Four-post Alignment Lift

Pneumatic lock release



EAC

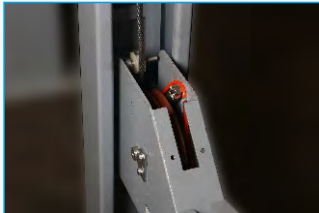
*Note: HFL4140E=4.7m platform
HFL4140SE=4.3m platform*

Technical Features



Control

Power pack with UP button on motor and manual lowering valve



Lock Release

Safety lock with automatic engagement and pneumatic lock release



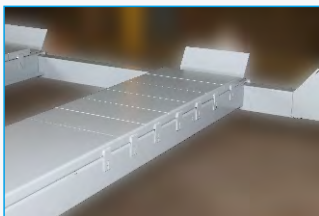
Wheel Stop

Wheel stops in front of the platform



Rolling Jack

Pneumatic rolling jack as standard accessory



Front Recesses

Adjustable front recesses for turning plates



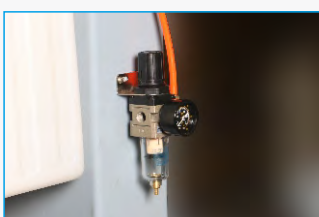
Side Slip Plate

Side slip plate for wheel alignment measuring and adjustment on rear axle



Drive Ramps

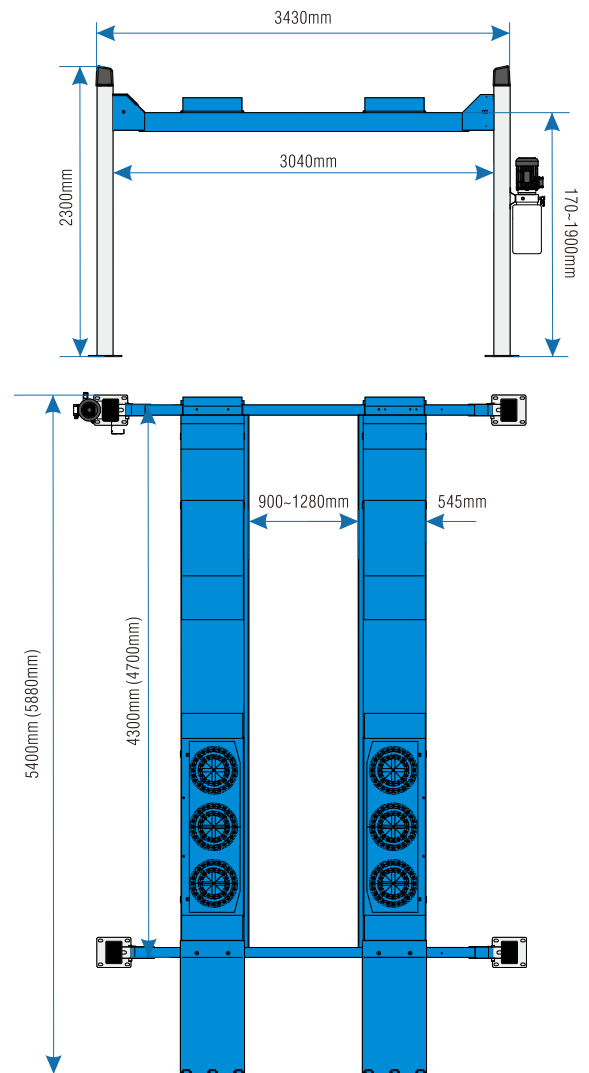
Drive ramps features non-skid structure



Air Filter

Air filter is equipped to protect air unlock cylinders from rust

Technical Drawing



Note: HFL4140SE (HFL4140E)

Technical Data

Model	HFL4140SE	HFL4140E
Lifting Capacity	4,000kg	4,000kg
Min. Height	170mm	170mm
Max. Lifting Height	1,900mm	1,900mm
Overall Length	5,400mm	5,880mm
Overall Width	3,430mm	3,430mm
Overall Height	2,300mm	2,300mm
Runway Length	4,300mm	4,700mm
Runway Width	545mm	545mm
Width between Posts	3,040mm	3,040mm
Width between Platforms	900~1,280mm	900~1,280mm
Lifting/Lowering Time	55Sec./45Sec.	55Sec./45Sec.
Motor Power	2.2kW	2.2kW
Power Supply	380V/50Hz/3Ph 220V/50Hz/1Ph	380V/50Hz/3Ph 220V/50Hz/1Ph