

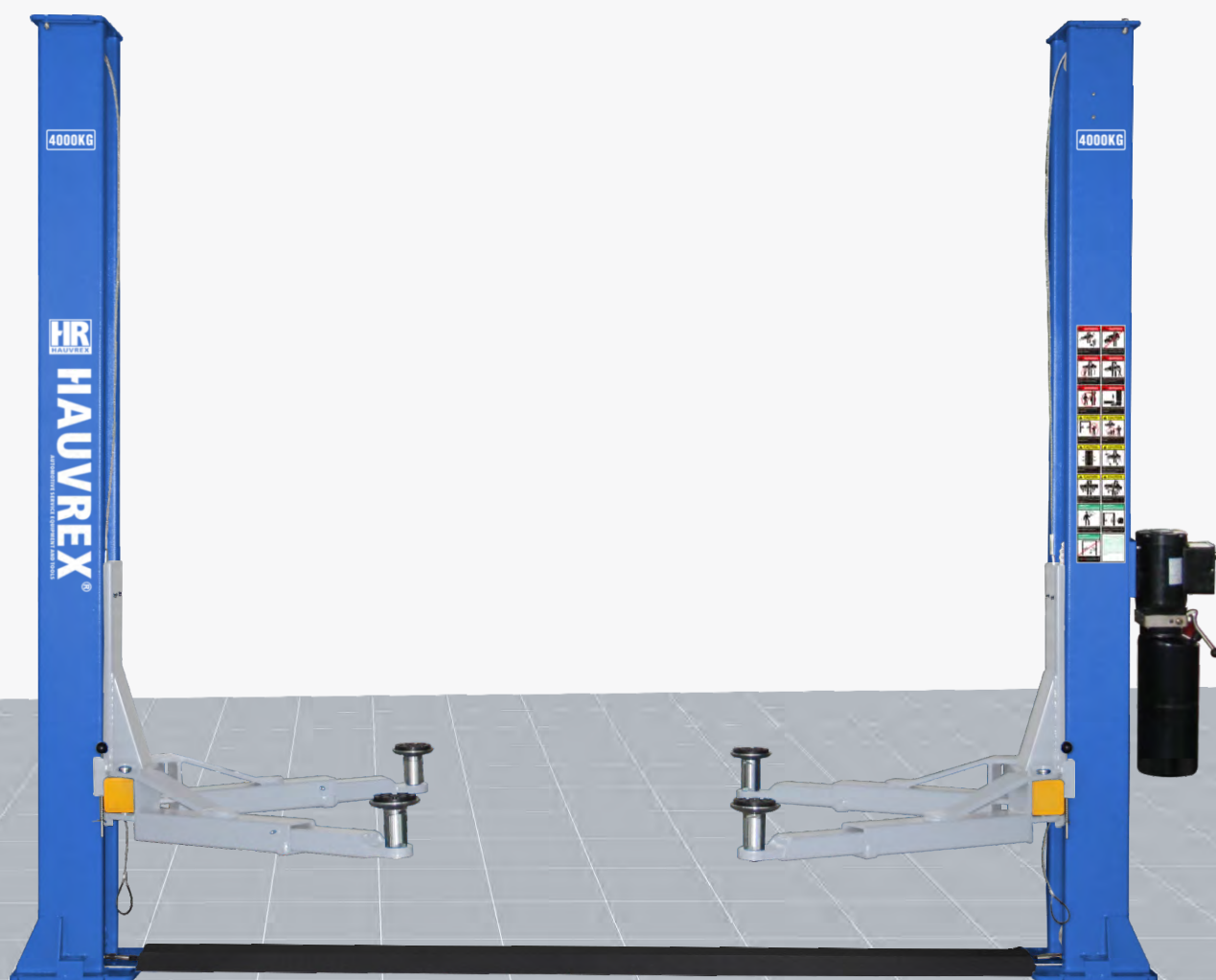
HTL

2040



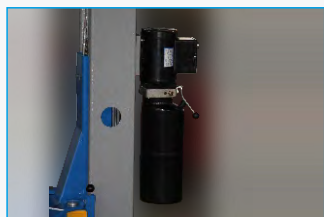
4.0 Ton Two-post Lift with Base

Dual side manual lock release



EAC

Technical Features



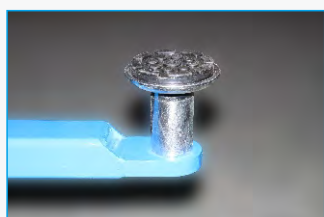
Control

Power pack with UP button and manual lowering valve handle



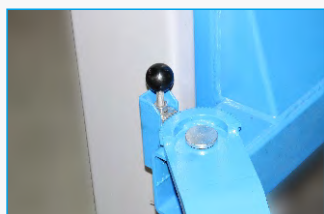
Lifting Arms

Asymmetric 2-stage lifting arms



Lifting Pad

Drop-in type lifting pad with 80mm height adaptor



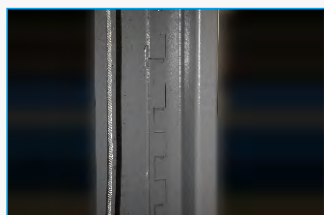
Arm Locks

Automatic arm locking during lifting and automatic unlock when the arm reaches the floor



Lock Release

Safety locks with automatic engagement and dual side manual lock release



Safety locks

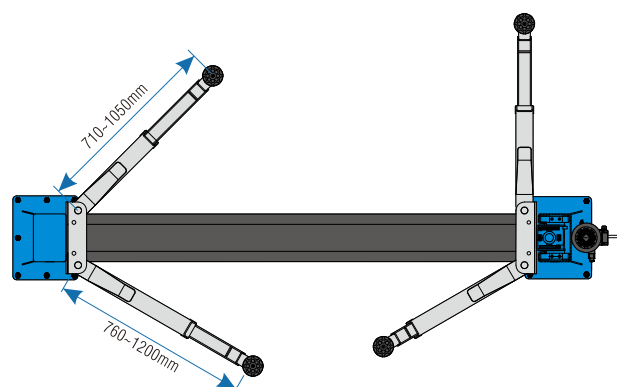
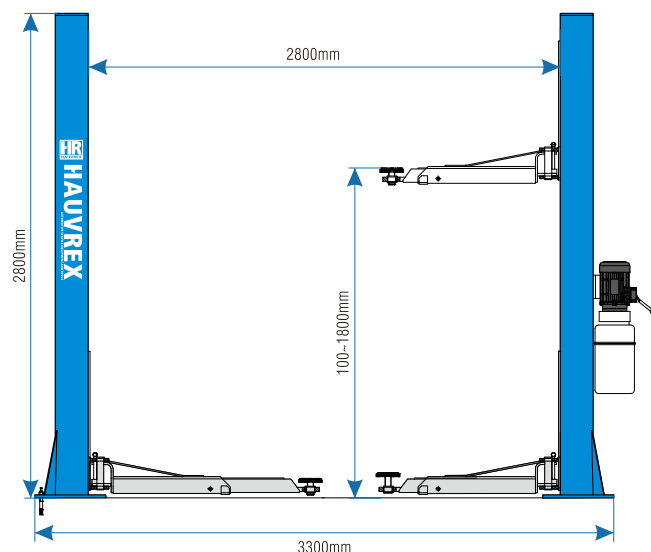
Safety lock on the column every 80mm.



Storage rack

Storage rack for height adaptors on the base

Technical Drawing



Technical Data

Lifting Capacity	4,000kg
Min. Height	100mm
Max. Lifting Height	1,800mm
Overall Height	2,800mm
Overall Width	3,300mm
Width between Posts	2,800mm
Short Arm Length	710~1,050mm
Long Arm Length	760~1,200mm
Lifting/Lowering Time	55Sec./45Sec.
Motor Power	2.2kW
Power Supply	380V/50Hz/3Ph 220V/50Hz/1Ph